

Isn't it fun to believe in magic? As a toddler, we had Santa Claus, bringing all of those gifts out of nowhere. Then, we moved up to the Magic Kingdom of Disney World, with the characters and rides that brought smiles to your face. Maybe we became avid readers and enjoyed the magic of Harry Potter and his friends.

But what happens when your life doesn't turn out like you planned? A job is eliminated, your health takes a turn for the worse, and suddenly you find yourself disabled and unable to participate with your community.

That's when magic happens again. Magic, in the form of SAWs: A group of men and women that volunteer their time and resources to bring smiles and joy back to those that thought that magic had left their life.

Thank you to our awesome volunteers and supporters for bringing magic to life.

Tom Lipinski, Chairman of the Board

More of our donors and sponsors are asking for "outcomes" and "impact" statements. As I look back on 2015 I am hard pressed to figure out where the time went but when I contemplate the outcomes and impact of SAWs during our twelfth season, it is unmistakable.

The numbers you will see in this report speak for themselves in terms of outcome. More than 250 lives were changed as a result of the efforts of the finest group of volunteers you can imagine. However, that number does not scratch the surface.

For each of those 250 individuals, there are family, friends, and neighbors. There are dozens of people who are impacted by the volunteers of SAWs providing freedom, independence and a renewed sense of dignity to a person with disabilities. Often we don't even know the extent of the impact of our work because of all the people it affects.

Our very first ramp taught us that you never know what the full impact is until you see all the players. The mother of our first ramp recipient thanked us after it was complete and then told us that they had a court date the next week with Child Services to determine if their daughter would be removed from the home because there was no way to get out in case of emergency.

During close to 13 seasons, SAWs has built more than 1,000 ramps throughout the state of Indiana but the lives we have touched number in the tens of thousands. In point of fact, what we do impacts everyone in the state since in many cases we are allowing someone to remain at home and not in an institutional care facility. That saves us all tax dollars.

This report is about people. The people we help, the people that help them and the people who help us help them. Thank you for your support.

Rik Hagarty, Founder & Chief Operating Officer

8811 Robbins Road
Indianapolis, IN 46256
www.SAWsRamps.org



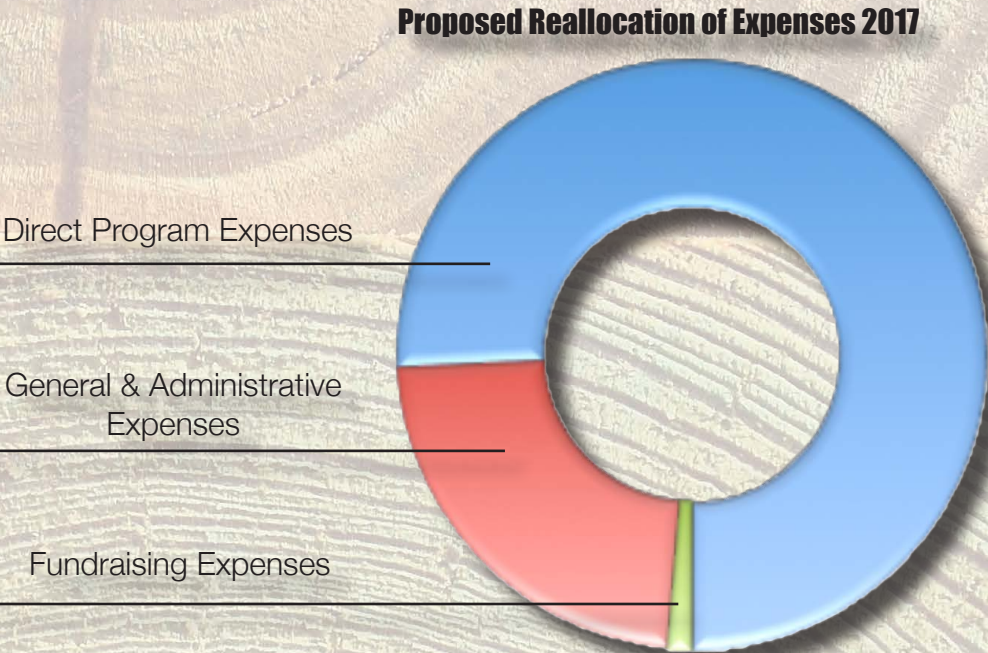
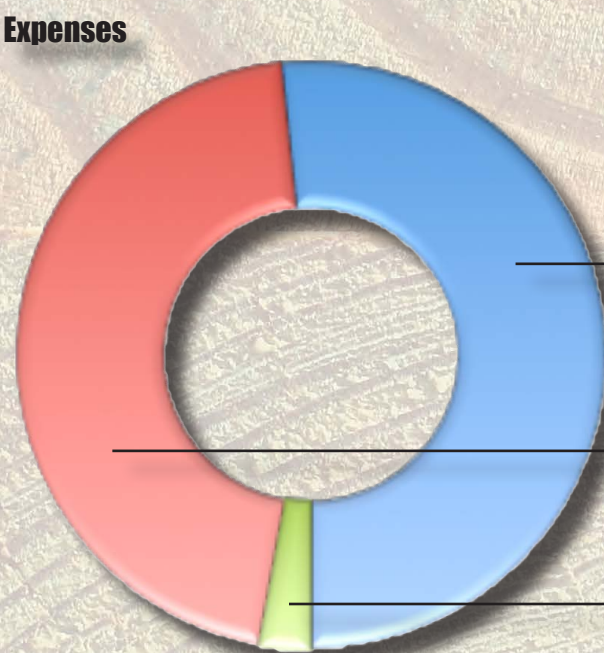
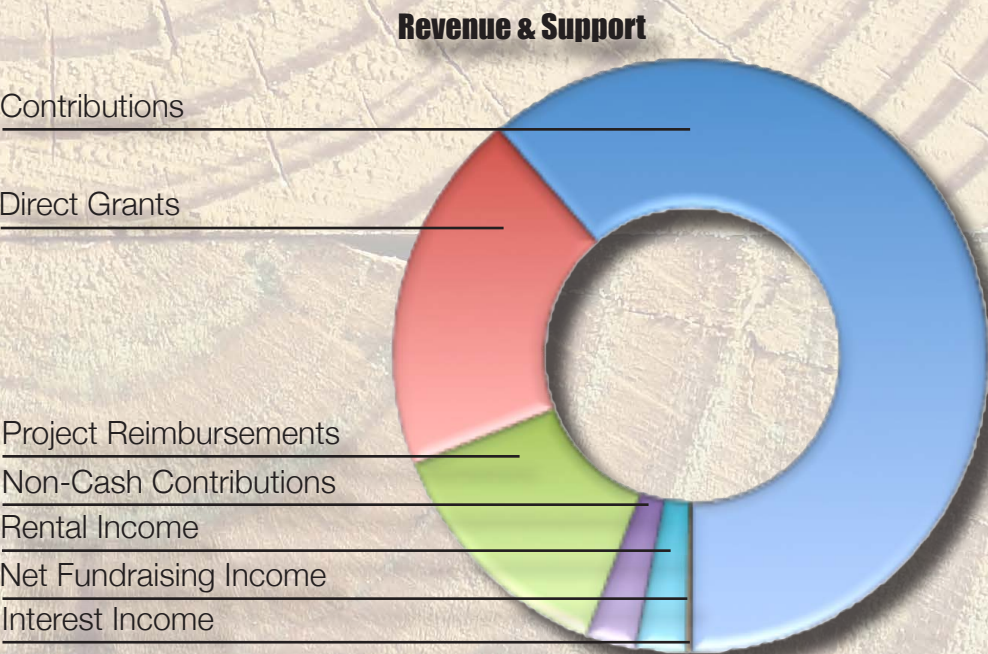
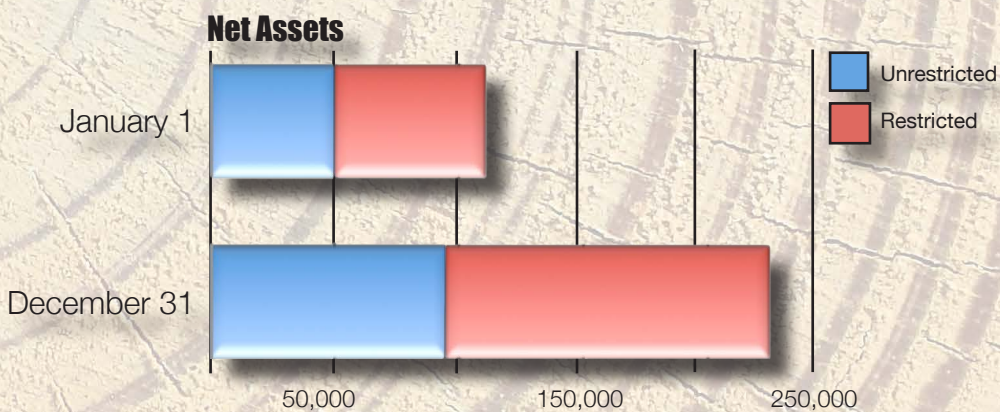
2015 Annual Report





Statement of Activities & Functional Expenses

Year Ended December 31, 2015



As a relatively young organization, SAWs relies on substantial volunteer labor to design, build and install the ramps we provide. Since this labor is not monetized in our financial statements, the amount reported as Direct Program Expenses does not fully reflect the total value of the services we furnish. Additionally, a significant portion of what we report as General and Administrative Expenses is essential for the delivery of our services. We anticipate that the relationship of these categories to each other will change as the agency matures. To receive the detailed financial report, contact the SAWs office at (317) 844-7664.